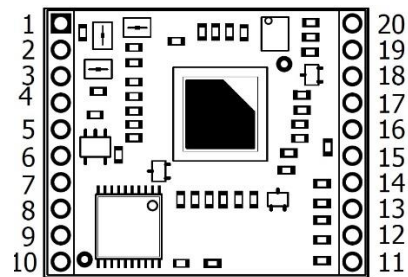
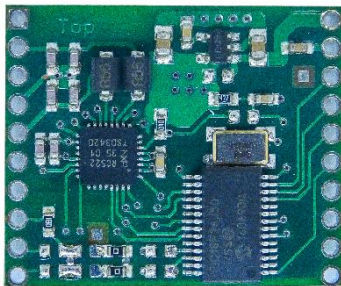


Anschlussplan

RFID Modul Mifare DESFire



Pinbelegung Modul (SM-4000er Serie)			
1	REC_ANT	11	RX (IN)
2	TX1_ANT	12	TX (OUT)
3	UB 3,3V...5V DC	13	Direction, Card Load
4	GND_ANT	14	DIGITAL I/O 1
5	TX2_ANT	15	/RESET
6	GND	16	DIGITAL I/O 2
7	n.c.	17	DIGITAL I/O 3
8	n.c.	18	DIGITAL I/O 4
9	n.c.	19	GND
10	n.c.	20	UB 3,3V...5V DC

Kommunikationsprotokoll

- 9600 Baud
- No parity
- 8 data bits
- 1 stop bit
- No handshake

Smart Technologies ID GmbH
Tichelweg 9
47623 Kevelaer

Tel.: +49 2832 973 20 52
E-Mail: info@smart-technologies.eu
Web: www.smart-technologies.eu