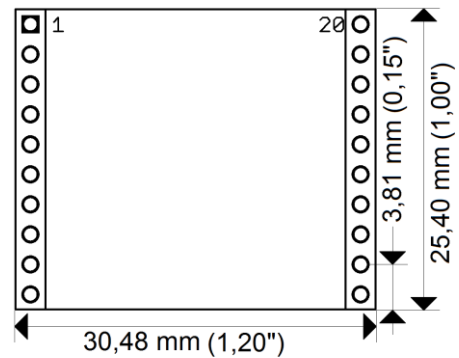
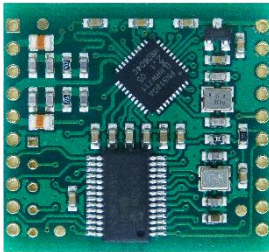


Anschlussplan

RFID-NFC Modul Multi ISO



Pinbelegung Modul (SM-4000er Serie)			
1	n.c.	11	RX (IN)
2	TX1_ANT	12	TX (OUT)
3	UB 3,3V...5V DC	13	n.c.
4	GND_ANT	14	n.c.
5	TX2_ANT	15	/RESET
6	GND	16	n.c.
7	USB D-	17	n.c.
8	USB D+	18	n.c.
9	n.c.	19	GND
10	n.c.	20	UB 3,3V...5V DC

Kommunikationsprotokoll

- 9600 Baud
- No parity
- 8 data bits
- 1 stop bit
- No handshake

Smart Technologies ID GmbH
Tichelweg 9
47623 Kevelaer

Tel.: +49 2832 973 20 52
E-Mail: info@smart-technologies.eu
Web: www.smart-technologies.eu